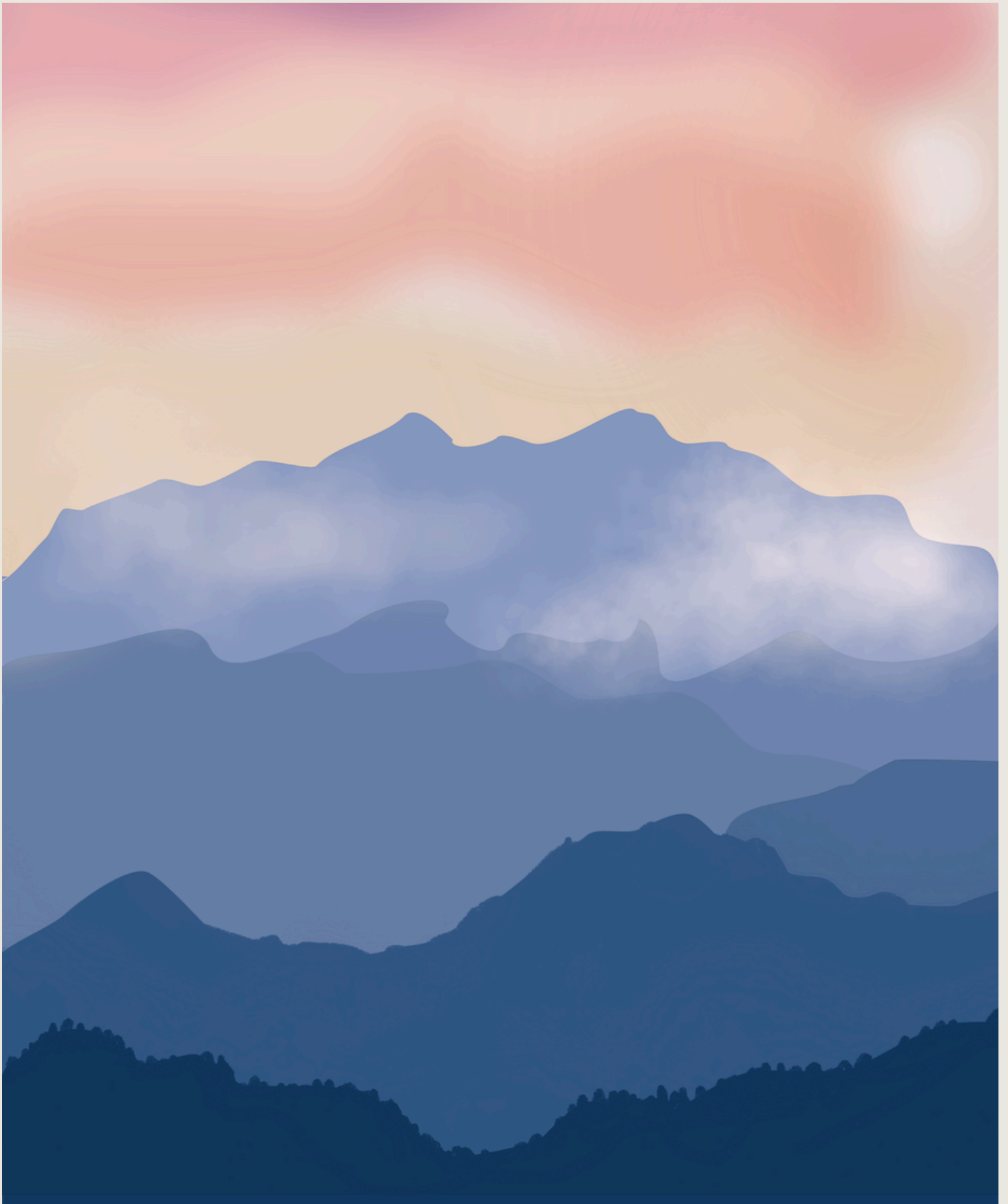


EMBRACING CHALLENGES

SCDTP FINAL YEAR CONFERENCE 2025



EVOLVE

ADAPT

INNOVATE

WELCOME SCDTP

Dear Colleagues and Friends,

Welcome to the South Coast Doctoral Training Partnership's Final Year Conference 2025! Every year, we come together to celebrate the remarkable achievements of our doctoral candidates and the innovative research that defines our SCDTP community. This year's theme, "Embracing Challenges," invites us to reflect on the profound and complex issues shaping our world and to explore how research can navigate the complex challenges facing today's world.

Throughout this day-long event, we will delve into diverse projects that push boundaries, question assumptions, and embrace the uncertainties of the unknown. This conference not only highlights the breadth and depth of research within our community but also celebrates the ways in which we evolve, adapt and innovate that drive these efforts.

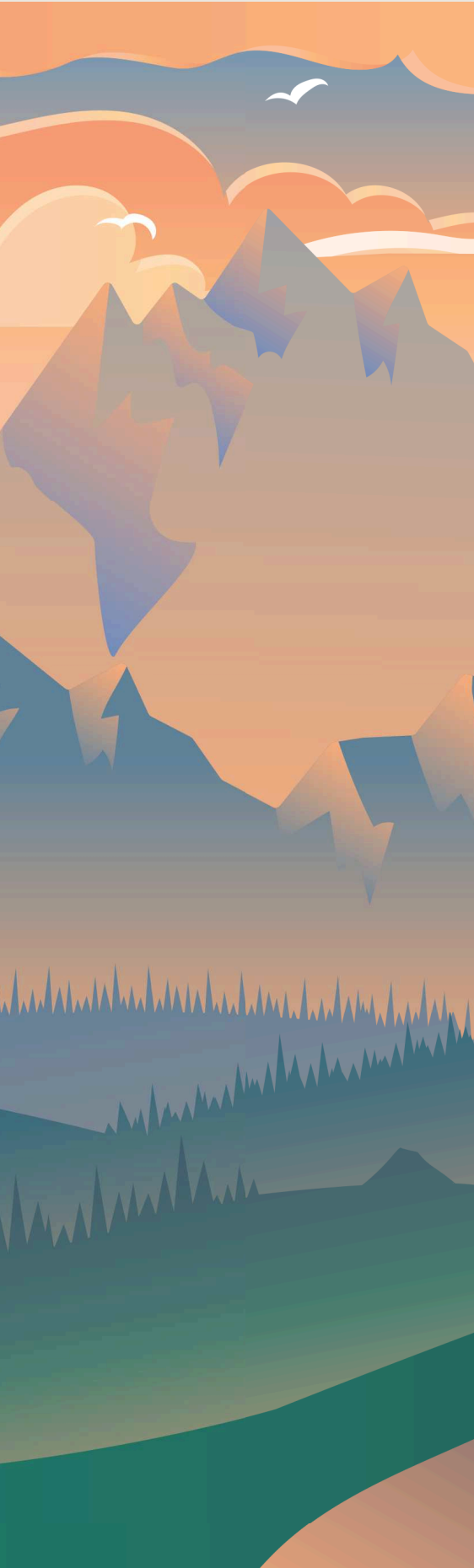


We hope today sparks meaningful discussions, new connections, and fresh perspectives, empowering us to navigate the complexities of our time with vision and purpose.

Thank you for joining us. Together, let's celebrate the power of research to shape a better future.

Your Final Year Conference Committee

TIMELINE OF DAY



10:00 - 10:30

Arrival, coffee and registration.
Room: Freda Swain Lounge

10:30 - 10:40

 Amplified Sound

Welcome, Grounding Session & Meditation,
Room: The Lens Studio

10:40 - 10:55

 Amplified Sound

Keynote: Dr. Ed Stoddard. Room: The Lens Studio

10:55 - 11:05

Comfort Break

11:05 - 12:50

Breakout Session 1. Meeting Room 1: Evolve / The
Lens Studio: Adapt / Meeting Room 2: Innovate

12:50 - 13:50

Lunch break and Poster / Networking session.
Students are encouraged to stand by their posters
at 13:30! Room: Freda Swain Lounge

13:50 - 15:50

Breakout Session 2: Meeting Room 1: Evolve / The
Lens Studio: Adapt / Meeting Room 2: Innovate

15:50 - 16.00

Comfort Break

16.00 - 16.05

 Amplified Sound

Event Summary: Prof. Athina Vlachantoni
Room: The Lens Studio

16.05 - 16.30

Networking / Posters. Room: Freda Swain Lounge
Then: off to SCDTP Social at Koh Thai restaurant



Dr. Edward Stoddard is an Associate Professor in International Security at the University of Portsmouth, specialising in regional security, armed conflict, and non-state actors.

Room: The Lens Studio, 10:40

KEYNOTE

"The ~~Coming~~ (actually already here) Challenge of AI"

This talk explores the transformative but challenging potential of new generative AI tools like ChatGPT, emphasising their potential impact on productivity, creativity, and skill development. Dr. Stoddard will discuss the current "AI moment" and how these technologies are reshaping the (academic) workplace, urging both caution and proactive engagement. The talk discusses different strategies for integrating AI into workflows—and offers practical advice on how to think about leveraging these tools, ethically, for academic tasks.

Dr. Edward Stoddard holds a PhD in International Relations from Portsmouth, funded by the ESRC, and was a Postdoc Fellow at the Freie Universitat in Berlin and a Marie Curie Fellow at Scuola Superiore Sant'Anna in Pisa, where he researched the evolving character of warfare. He is a Visiting Professor at the College of Europe (Warsaw), a Fellow of the Society for Peace Studies and Practice, Nigeria, a member of the University of Lancaster's Centre for War and Diplomacy and an Affiliated Member of the Emerging Research in International Security Group at Sant'Anna. His interdisciplinary work has explored security challenges across West Africa, the Levant, the Gulf, and the former Soviet Union, including most recently a comparative British Academy-funded project on armed conflicts in the Sahel and Lake Chad regions. Dr. Stoddard is currently exploring research looking to integrate machine learning and geospatial data science with qualitative conflict analysis to understand conflict expansion dynamics in order to mitigate humanitarian challenges in West African armed conflicts.



University of Brighton



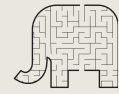
SUMMARY

Prof. Athina Vlachantoni

As the Director of the SCDTP, Professor of Gerontology and Social Policy in the Department of Gerontology at the University of Southampton, Athina is also a member of the Centre for Research on Ageing and the ESRC Centre for Population Change. Her research interests are at the interface of ageing over the life-course and social policy. Her recent research projects have focused on informal care provision across the life-course in the UK, Europe and China; pension protection among minority ethnic groups in the UK; and long-term care provision in India, China, the UK and sub-Saharan Africa.

"The SCDTP Final Year conference is here! We are excited to hear about all finalists' research, make new friendships and solidify existing ones. Thank you to the fantastic organising committee and the SCDTP office for all your hard work, and to all colleagues across the four Universities for supervising our students. Have an inspiring day!" - Athina

OUR CHAIRS



Max Dixon

**UNIVERSITY OF
PORTSMOUTH**

I am a PhD candidate at the University of Portsmouth researching British foreign policy towards Taiwan following Taiwan's democratisation in the 1990s. I hold an undergraduate degree in Politics and Sociology from the University of Warwick, a Masters' degree in International Relations from the University of Portsmouth and a Masters' degree in Social Research Methods from the University of Southampton. Beyond academia I undertook research on China, Hong Kong and Taiwan for the former chair of the Foreign Affairs Select Committee Alicia Kearns MP, I currently lead a research project charting the development of Taiwan Studies in Europe and North America for the European Association of Taiwan Studies and I have vast previous experience in education and the international education industry in the United Kingdom, Hong Kong and mainland China.



Emma Levy

**UNIVERSITY OF
BRIGHTON**

I am a first-year PhD student at the University of Brighton, researching a harm reduction model for hazing and initiations in UK university sport. I did my undergraduate degree in Criminology and Criminal Justice at Swansea University, where I started my research of hazing and initiation culture, which included hegemonic masculinity in male initiation culture. I continued similar research for my MSc in Social Research Methods at Swansea University, where I researched the overlap of male initiation culture in female sport. My hope in my current research is to bridge the gap between university regulation and student sport culture, that I have found in my previous research.



Alice Bell

**UNIVERSITY OF
SOUTHAMPTON**

I am a first-year PhD student in Economics. I am studying cooperation around common pool resources with tipping points. I previously completed a BSc and an MRes in Economics at the University of Southampton. I hope to use experiments to examine the underlying mechanisms for coordination around common pool resources with tipping points. I am particularly interested in their application to climate change and cooperation around avoiding uncertain and risky tipping points that will cause irreversible damage to our environment.



EVOLVE

"NEVER STOP CREATING."

SCDTP

BREAKOUT SESSION 1: TIMELINE

Luke Chandaman

11:10 The Death Positivity Bias

Pamela Radcliffe

11:25 Memory beliefs and memory distortion: The impact of memory misunderstanding in clinical and legal contexts

Mohamed Ismail Abdul Kader

11:40 Save the Last Dance for Me: Dynamic Cues and Social Perception

Emily Ribbons

11:55 Exploring Individuation as a Strategy for Enhancing Recall Accuracy in Intelligence-Gathering Investigation Teams

Francesca Zecchinato [● REC]

12:10 Promoting the Mental Health of Children with Anxious Mothers and Fathers: Examining Risk Factors and Parents' Needs

Questions for presenters

12:25 Scan the Slido QR code in the room, type in your question and we'll read it out at the end!

BREAKOUT SESSION 2: TIMELINE

- Shannon Slater-Johnson*
-
- 13:55 How orangutans cope in a rehabilitation environment: Examining attachment and attachment-related behaviours with mothers, caregivers and peers
- Rory Phibbs*
-
- 14:10 Cross-gender Coaching: Women Coaching Men in Field Hockey
- Robin Skyer*
-
- 14:25 Conceptualisations of care in trans communities in England
- Conor Gaughan* [● REC]
-
- 14:45 Charting Westminster's Bubble: An Ideological Map of Britain's Digital Elite
- Carolynn Low*
-
- 15:00 The relevance of the 'refugee' category for entrepreneurs
- Questions for presenters*
-
- 15:15 Scan the Slido QR code in the room, type in your question and we'll read it out at the end!



ADAPT

"NEVER STOP CREATING."

ROOM X

BREAKOUT SESSION 1: TIMELINE

Colette Nsofor

11:10 The influence of disruptive technologies on agri-food supply chain resilience

Chloe Dixon

11:25 Reducing work hours for a 'better future'? Exploring preferences and experiences of working-time reduction

Anthony Howell

11:40 Alienation via Online Shopping in Brighton and Reykjavik

Mabel Newton

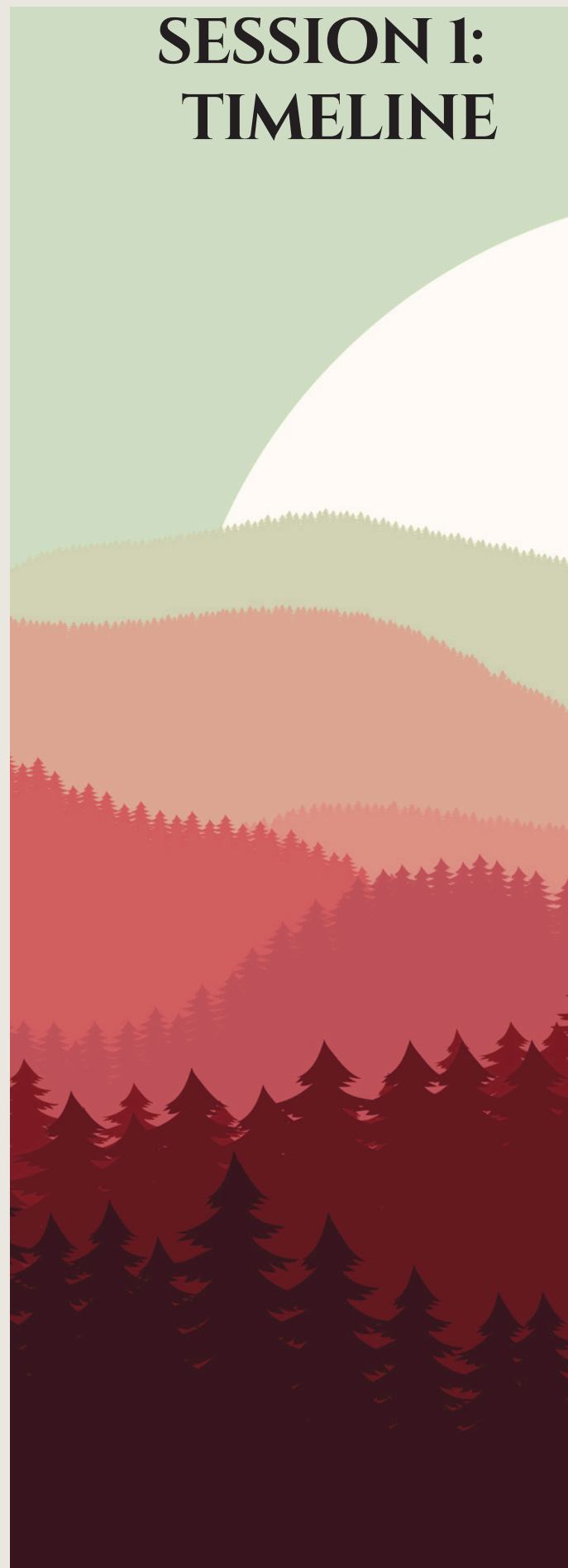
11:55 Radical right populism and anti-migrant norm contestation: a comparative analysis of the UK and US

Haru Menard

12:10 Material belongings: Family and nation as lived by members of LGBTQ+ in Lebanon

Questions for presenters

12:25 Scan the Slido QR code in the room, type in your question and we'll read it out at the end!



BREAKOUT SESSION 2: TIMELINE

Amruta Bagwe

13:55 Essays on Youth Unemployment and Child Work in India

Elinor Lim

14:10 Investigating the role of family in autistic students' university journeys

Isaac Thornton

14:25 An international education strategy? A social ecological approach to social exclusion and resilience among international students

Emily Ellington

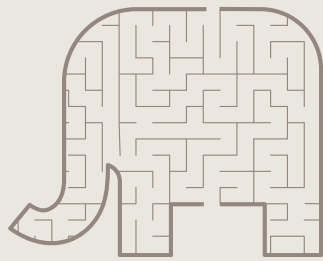
14:45 Discussing significant life decisions with autistic young people: supporting understanding and agency through dialogue

Seyedeh Sorour Farahi

15:00 Impact of policy alternatives on patient outcomes using simulation modelling in hospital operations following flood disasters

Questions for presenters

15:15 Scan the Slido QR code in the room, type in your question and we'll read it out at the end!



INNOVATE

"NEVER STOP CREATING."

SCDTP

BREAKOUT SESSION 1: TIMELINE

Daniel Griffiths

11:10 “It feels like a lightness, and it feels... happy”:
Gender Euphoria, Gender Dysphoria, and
Sexual Wellbeing in Transgender and Non-
Binary Adults

Rhia Perks

11:25 Attachment and Support Behaviours in Long-
Distance Relationships

Fraedan Mastrantonio

11:40 Non-binary people’s sexuality and wellbeing:
the role of overlapping minoritized identities

Sarah Jenner

11:55 Using adolescent identity formation to
motivate dietary change: The role of
adolescent peer group values

Thokozile Tembo

12:10 News Sentiment and Cryptocurrencies:
Empirical Asset Pricing, Intraday News
Asymmetry and Stability during Crisis
Periods

Questions for presenters

12:25 Scan the Slido QR code in the room, type in
your question and we’ll read it out at the end!

BREAKOUT SESSION 2: TIMELINE

Luciano Perfetti-Villa

13:55 On the use of small area estimation with geospatial data

Alice Wolfle

14:10 Seasonality and Child Health in Bangladesh

Shilpy Bhat

14:25 Understanding the implementation of 'Cobots': A mixed-methods case study on Hybrid Assistive Limb (HAL) in Hampshire County Council's adult social care

Haden Dewis

14:45 An Interdisciplinary Approach to Understanding why Targets Are Missed During Interactive Searches

Michaela Trescakova

15:00 Perception of Natural Scenes: Colour and Depth in Vision

Hannah Carr

15:15 Conduct problems and head injuries across development: Investigating longitudinal symptom interplay and common neural correlates

Questions for presenters

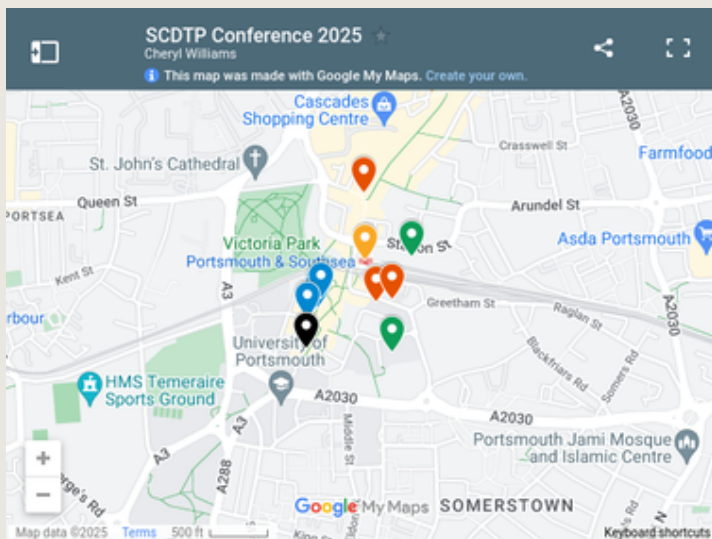
15:30 Scan the Slido QR code in the room, type in your question and we'll read it out at the end!

GETTING THERE

LOCATION:



Portsmouth Guildhall, Guildhall Square,
Portsmouth. PO1 2AB.



Click on this symbol above for the map legend.
Double-click on the map to interact.

DROP-OFF

You can be dropped off outside the Guildhall, on King Henry 1st Street.

A drop curb is outside the venue.

TAXI

There is a metered taxi rank on Guildhall Walk.

BY TRAIN:

Portsmouth & Southsea Train Station is located 100 meters from the venue.

BY BUS:

Most local and regional bus services stop at Commercial Road, City Centre, 5 minutes from the venue. The closest stop is Civic Offices on Isambard Brunel (Stop M (from the north) or K (from Southsea)).

<https://www.firstbus.co.uk/>

BY CAR:

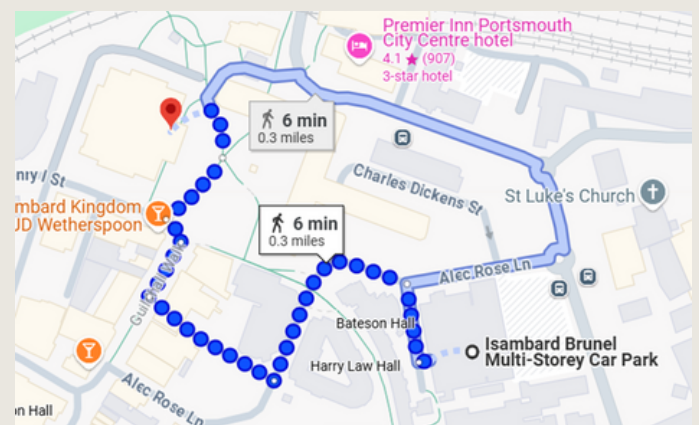
Portsmouth is easily accessible from junction 12 of the M275, with links to the M3 and A3

PARKING OPTIONS:

Blue Badge holders are exempt from pay and display charges in Portsmouth City Council owned carparks when you display your badge. Please note that this is NOT the case for any NCP owned carparks or the Isambard Brunel Multi Storey.

Isambard Brunel Multistorey Carpark -

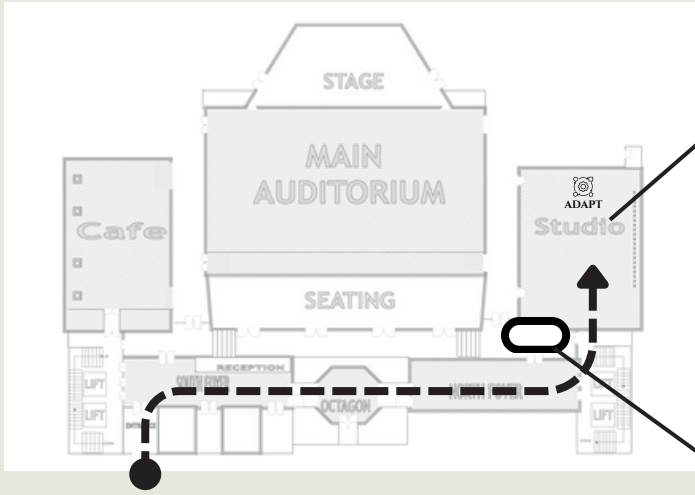
Discounted parking available from the Guildhall. Swap your carpark entry ticket at the Guildhall Box Office (before 5 pm) for a carpark exit ticket at only £4.50. This is the closest Blue Badge parking. See map below for the wheelchair accessible route to the venue (Google Maps defaults to a route including stairs).



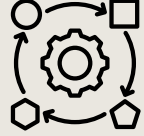
Station Street Carpark, PO1 1BE - all day = £6

INSIDE


GROUND FLOOR




FIND ACCESSIBLE TOILETS IN THE BASEMENT (NR. LIFTS) & ON THE 1ST FLOOR

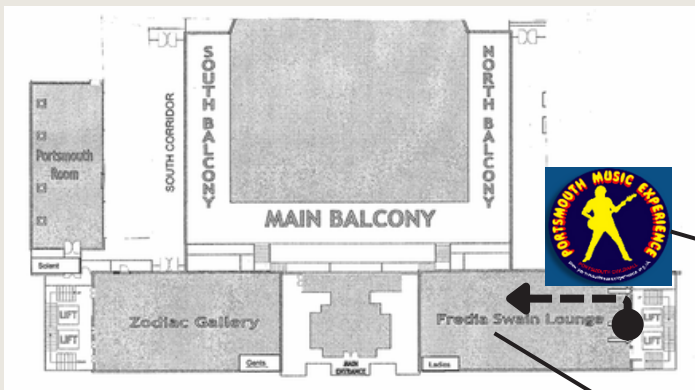


ADAPT



The Lens Studio

1ST FLOOR



CHILL OUT

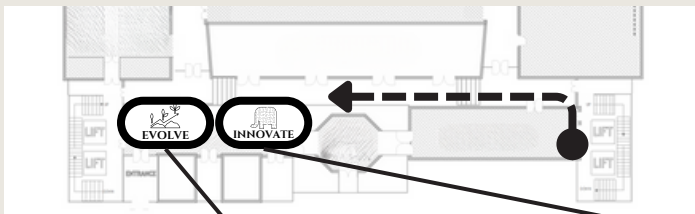


A space to chill, decompress, and escape the overwhelm. This room will have low lighting, comfy seats, and be a space for quiet (Nb. no phone calls in here please).



PORTSMOUTH MUSIC EXPERIENCE EXHIBITION

3RD FLOOR



LUNCH & POSTERS



Freda Swain Lounge



EVOLVE



Meeting Room 1



INNOVATE



Meeting Room 2

USEFUL INFORMATION

Fidget Toys

Available in each break out room for all to use. Fidget toys can help to improve concentration. Give it a try, but please return them when you are done.

Need help?

All SCDTP staff and organising committee will be wearing a yellow lanyard.



The Portsmouth Music Experience Exhibition

Dedicated to the musical influences on Portsmouth, the Portsmouth Music Experience Exhibition is located inside the Guildhall and is FREE to wonder around.

Further information can be found here:

<http://www.portsmouthmusicexperience.org.uk/>

Sustainability

Recycling stations are provided throughout the building, please recycle.

All plastic glasses used at the venue have been replaced with Oxo-Biodegradable Flexy Glass – an eco-friendly option.

LED lighting is used throughout the building.

More information regarding sustainability can be found here:

<https://www.portsmouthguildhall.org.uk/about-guildhall/about-us/sustainable-guildhall/>



Wireless Internet

Network ID - GHT GUEST



ORGANISING COMMITTEE



Michelize van Heerden
UNIVERSITY OF
CHICHESTER

I am a PhD student at Chichester University, researching the Longitudinal Impact of the Women's Sport Leadership Academy (WSLA). My academic journey includes a Master's in Sport Business and Leadership, where I focused on women's career trajectories in leadership within motorsport, and a Bachelor's in International Sport Management and Business. Beyond academia, I have extensive experience in event management, having worked on major projects like the EURO 2024, production for London Lions Basketball, and campaigns for PUMA. Most recently, a campaign I was involved in won an award at the Football Content Awards 2024, showcasing my passion for impactful and innovative work in the sports industry.



Cheryl Williams
UNIVERSITY OF
PORTSMOUTH

As a first-year PhD student, I am researching a virtual reality intervention for chronic pain management. I earned a BSc in Psychology from the University of Portsmouth in 2004 and subsequently worked as a data analyst for a national energy company. My passion for fitness led me to retrain as a coach in strength and conditioning, biomechanics, and yoga, helping individuals manage pain. I completed a MResSc in Physical Activity, Health & Rehabilitation (2022) at UoP, exploring the impact of mood on running biomechanical asymmetry, and an MSc in Social Research Methods (2024) from the University of Southampton. I aim to promote health and wellbeing through my research.



Rachel Thomson
UNIVERSITY OF
PORTSMOUTH

I am a first-year PhD student investigating how differences in African elephant cognition and personality influence crop-raiding behaviour in Botswana. I hold a BSc in Biology from the University of Manchester, a MRes in Neuroscience from Newcastle University, and a MSc in Social Research Methods from the University of Southampton. In between my degrees I have worked on blue whale migration in Spain, baboon cognition in Namibia, Asian elephant spatial-use in Thailand and howler monkey personality in Paraguay! My PhD fieldwork will entail interviewing farmers, observing elephants with novel objects, and cognitive testing of crop-raiding individuals using puzzle boxes! I aim to develop strategies to mitigate human-elephant conflict.

ORGANISING COMMITTEE



Tora Giacomelli
UNIVERSITY OF
PORTSMOUTH

I am a first-year PhD student researching health literacy in young children. I have a background in Health Psychology, having previously worked as a Research Assistant for an EU-Funded project on sexual health in older adults, and as Evaluation Officer for the children's health charity Anna Freud. My PhD will focus on understanding how and why health literacy develops in the critical early childhood period, as well as understanding key influences such as parents, teachers and peers. The outcomes will include an increased understanding, conceptualisation and operationalisation of health literacy in early childhood.



Clare Phillips
UNIVERSITY OF
SOUTHAMPTON

I completed a BSc in Biology at the University of Southampton in 2005 (!) and subsequently moved to London where I trained to be a nurse at King's College. In 2016, I returned to studying and completed an MSc in Global Health at Brighton and Sussex Medical School. This got me really interested in research and the enormous scope it has to influence change. I continue to work clinically, as an alcohol nurse specialist, alongside my PhD (part-time). My research aims to explore the experiences of Polish migrants to the UK accessing care and support for alcohol use disorder and alcohol-related liver disease.



Alice Bell
UNIVERSITY OF
SOUTHAMPTON

I am a first-year PhD student in Economics. I am studying cooperation around common pool resources with tipping points. I previously completed a BSc and an MRes in Economics at the University of Southampton. I hope to use experiments to examine the underlying mechanisms for coordination around common pool resources with tipping points. I am particularly interested in their application to climate change and cooperation around avoiding uncertain and risky tipping points that will cause irreversible damage to our environment.



THANK YOU